



**Noble Alchem
Private Limited**
Mfr. of Silicates & Titanates



Mfr. of Silicates & Titanates



www.noblealchem.com

Milestones

2014 – 2015

Production Capacity of Silicates enhanced to 30000 M.T. Per annum

Production Capacity of Titanates enhanced to 500 M.T. Per annum

2009 – 2010

Established 2nd plant at Indore (M.P.) with production capacity of 6000 M.T. Per Annum

Production Capacity of Potassium Titanate enhanced to 200 M.T. Per annum

Started Exports to **U.S.A., MEXICO, KENYA, TANZANIA, EGYPT, SAUDI ARABIA, MALAYSIA, INDONESIA, PHILIPPINES, VIETNAM** and other **AMERICAN, AFRICAN & ASIAN** markets.

2001 – 2002

Production Capacity of Potassium Silicate enhanced to 6000 M.T. Per annum

Started manufacturing of Potassium Titanate with production capacity of 50 M.T. Per Annum

1994 – 1995

Production Capacity of Potassium Silicate enhanced to 3000 M.T. Per annum

1986 -1987

Established Bhiwani Unit for manufacturing of Potassium Silicate having production capacity of 1000 M.T. Per annum

30 YEARS OF
EXCELLENCE
SINCE 1986

ABOUT US

Established since 1986, Noble Alchem is engaged in manufacturing wide range of SILICATES & TITANATES for various industries, catering to a wide spectrum of clientele.

MISSION:

To become the most trusted and reliable supplier of SILICATES & TITANATES, to the best buyers in the world, always produce quality products, be sensible towards environment, and care about employees.

INFRASTRUCTURE:

We are the largest manufacturer of Potassium Silicates & Titanates in INDIA.

With an installed capacity of 30,000 MT, we produce close to 20000 MT of SILICATES & TITANATE in our two manufacturing facilities strategically located at two different geographical locations in INDIA.

For Domestic Markets, we have intentionally developed our own fleet of tankers for bulk deliveries in shortest lead-time. It helps us in reducing the client's logistics & inventory cost and also ensures that the quality is not tempered during the transportation.

For Global Markets, we have done specific tie-ups with various shipping lines & agents to ensure the lowest freight charges, which makes us more competitive.

- **Worldwide Satisfied Customers**
- **Manufacturing Facilities**

QUALITY CONTROL & ASSURANCE

Quality is our core strength. We believe "Quality is Religion".

To meet the highest Quality Standards, a team of young, highly qualified, dedicated and well experienced professionals are working throughout the process .

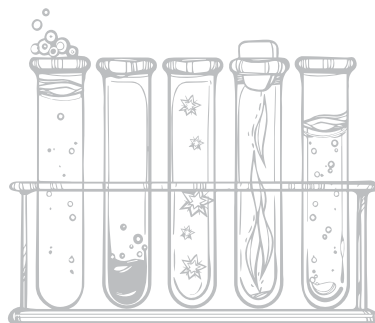
Quality Control on all products starts right at the raw material stage. Buyers that associate with us even once, stay with the company forever. This is a testimony of our firm commitment to quality & exceptional service.

We, at Noble, are committed to continually improving the effectiveness of the Quality Management System of the Organization.

We have installed the most modern machineries and best quality testing equipments like XRF, PSA, SEM, Viscometer etc. to ensure that only the specified goods, according to client's specifications, leave the plant.

PACKING OPTIONS

- Tanker load
- IBC
- Drums
- Flexi Tank
- ISO Tank Container
- 25 KG HDPE / PAPER Bags
- Jumbo bags



PRODUCTS & SPECIFICATIONS

The welding electrode segment is growing very rapidly and we believe our products & technology offer the welding rod manufacturers, flexibility and value addition that gives them the edge in the market place.

I. SILICATES

Manufacturing of many industrial elements is based on Welding. To deliver the best quality industrial products, the quality of welded joints has to be perfect, which depends on welding rods and to do so, the manufacturer has to carefully select the welding additives to the composition.

Today, silicates are often the main welding additives and their function widely exceeds that of a simple binder.

Smooth Extrusion, Quiet Burning and Low Arc Spattering are some of the attributes, which depend upon the quality of SILICATES.

We manufacture Potassium, Sodium, Lithium and Mixed Silicates of the highest purity.

Silicates are available as liquids, solids (lumps) and powders.

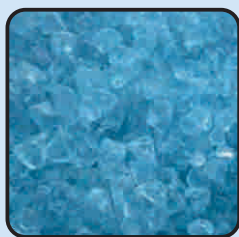
Our experienced specialists develop customized solutions to meet the requirement of our customers.

POTASSIUM SILICATE LIQUID (REGULAR / PREMIUM)			
Grade	K-66	K-76	K-120
Weight Ratio	2.0 to 2.1	2.0 to 2.1	1.45 to 1.55
K₂O (%)	10 to 12	12 to 14	18 to 20
SiO₂(%)	20 to 24	26 to 28	26 to 28
Viscosity (cps)	35 to 70	200 to 300	300 to 500
Sp. Gravity	1.33 to 1.35	1.38 to 1.40	1.45 to 1.50
Baume	36 to 38	39 to 41	45 to 49



SODIUM SILICATE LIQUID (REGULAR / PREMIUM)		
Grade	NA-80	NA-100
Weight Ratio	3.0 to 3.5	2.0 to 2.4
Na₂O (%)	8.5 to 10	13.5 to 14.5
SiO₂(%)	24 to 30	27 to 30
Viscosity (cps)	200 to 300	100 to 200
Sp. Gravity	1.37 to 1.42	1.45 to 1.50
Baume	39 to 43	45 to 49

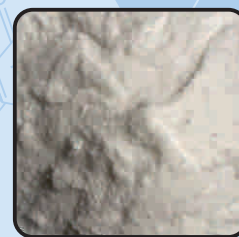




POTASSIUM SILICATE LUMPS	
Grade	K Silicate
Weight Ratio	2.0 to 2.1
K ₂ O (%)	30 to 35
Na ₂ O (%)	Nil
SiO ₂ (%)	65 to 70
Mole Ratio	3.1 to 3.3
Total Solids	> 99%
Color	Transparent



MIXED SILICATE LIQUID		
Grade	K Na	K Li
K ₂ O (%)	6 to 7	10 to 12
Li ₂ O (%)	-	0.5 to 1.0
Na ₂ O (%)	4 to 5	1.0 to 2.0
SiO ₂ (%)	26 to 28	26 to 28
Viscosity (cps)	100 to 150	50 to 150
Sp. Gravity	1.38 to 1.40	1.36 to 1.40
Baume	39 to 41	38 to 41



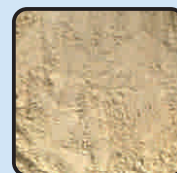
POTASSIUM SILICATE POWDER	
Grade	K Silicate (P)
K ₂ O (%)	35 to 40
Na ₂ O (%)	Nil
SiO ₂ (%)	54 to 58
H ₂ O (%)	5% Max
Weight Ratio	1.45 to 1.65
Solubility	< 100 Sec.
Color	White

II. TITANATES

Our Potassium, Sodium & Mixed TITANATES are widely used in low hydrogen electrode, AC/DC electrode, stainless steel electrode and flux-cored wire.

These additive agents are included in flux formulations to:

- ◆ Enhance wear resistance in high temperature formulations that require chemical stability.
- ◆ Reduce arc voltage & provide arc stability.
- ◆ Reduce spattering.
- ◆ Provide fine welding line and enhance bonding characteristics.
- ◆ Improve slag mobility.



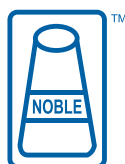
Particulars	Color	TiO ₂ (%)	K ₂ O (%)	Na ₂ O (%)	SiO ₂ (%)	S (%)	P (%)	H ₂ O (%)	Mesh Size
Potassium Titanate	White / Light Yellow	74 to 80	17 to 22	0.5 Max	1.0 Max	0.1 Max	0.04 Max	0.5 Max	Customized
Sodium Titanate	Yellow	75 to 85	0.5 Max	12 to 20	1.0 Max	0.1 Max	0.04 Max	0.5 Max	Customized
Sodium Silicate Titanate	Light Grey	57 to 63	0.5 Max	10 to 15	23 to 28	0.1 Max	0.04 Max	0.5 Max	Customized
Potassium Sodium Silicate Titanate	Dark Yellow	43 to 53	18 to 22	3 to 7	22 to 27	0.1 Max	0.04 Max	0.5 Max	Customized





Haryana

Madhya Pradesh



Noble Alchem Private Limited

Mfr. of Silicates & Titanates

Correspondence Address: 6, M.C. Colony, Rohtak Road, Bhiwani - 127021, Haryana, INDIA

Works: 5 K.M. Stone, Vill. & PO. Haluwas, Dadri Road, Bhiwani - 127021, Haryana, INDIA
Mob. No. +91 98120 45151 Tel: +91 9254 329520/21 Email: silicate@noblealchem.com

Correspondence Address: 203, Rivoli Apartment, 135, Baikunthdham Colony,
Behind Anand Bazar, Indore - 452018, M.P., INDIA

Works: Survey No. 9/1/2, Vill. Narwal, Near GAIL INDIA, Sector-E,
Sanwer Road, Indore - 452015, M.P., INDIA
Mob. No. +91 99812 13000 Telefax : +91 731 4222524 Email: indore@noblealchem.com

www.noblealchem.com

